

Keynote Speakers

Scott Alan Bradford

United States Department of Agriculture - Agricultural Research Service, Riverside, United States

Cornelis A. M. van Gestel

Vrije Universiteit Amsterdam, Amsterdam, The Netherlands

Jérôme Labille

CNRS, CEREGE, Aix-Marseille Université, Aix-en-Provence, France

Spiros A. Pergantis

University of Crete, Heraklion, Greece

Deadlines

- June 1, 2018 ⇒ Abstract submission opens
- July 2, 2018 ⇒ Registration opens
- July 31, 2018 ⇒ Abstract submission ends
- August 10, 2018 ⇒ Notification about acceptance and type of contribution
- August 15, 2018 ⇒ Early bird registration ends
- September 7, 2018 ⇒ Regular registration ends
- September 19, 2018 ⇒ Workshop starts

Further Information

For further information about registration, accommodation, abstract submission, workshop fees and the programme, please visit the workshop web site:

www.internano-conference.de

We acknowledge financial support from the German Research Foundation (Deutsche Forschungsgemeinschaft DFG) within the INTERNANO research unit "Mobility, aging and functioning of engineered inorganic nanoparticles at the aquatic-terrestrial interface" (FOR 1536).

Registration

Workshop fees:

Early bird (until August 15, 2018):	Regular: 130 EUR Reduced: 110 EUR*
Standard (August 16, 2018 - September 7, 2018):	Regular: 150 EUR Reduced: 130 EUR*

* Reduced fee for actively participating PhD, Master, Bachelor or Diploma students. Please provide a copy of your student ID with your registration.

The workshop fee includes: Access to all workshop sessions, workshop abstract booklet, lunch and coffee breaks during the conference.

Local Organizing Committee

Gabriele E. Schaumann and George Metreveli

University of Koblenz-Landau, Landau, Germany

Contact

Institute for Environmental Sciences
University of Koblenz-Landau
Fortstr. 7
76829 Landau in der Pfalz, Germany

Fax: +49(0)6341 280 31577
E-Mail: internano@uni-landau.de

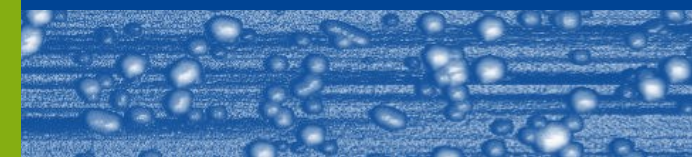
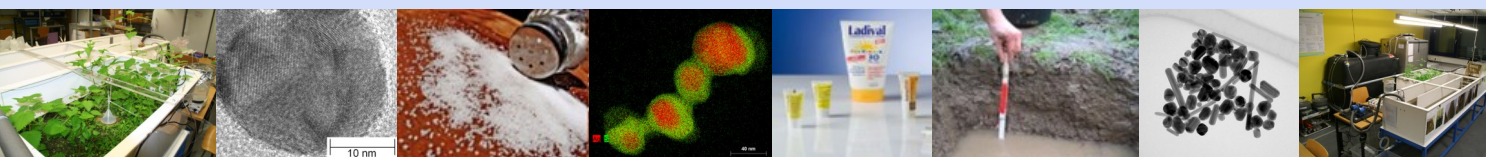
International Workshop

Engineered Nanoparticles in Aquatic and Terrestrial Compartments: Fate, Effects and Analytics



19th - 21st September, 2018

Landau in der Pfalz, Germany



Background Information

Engineered nanoparticles (ENP) are widely used in different industrial fields and products. In the last years, the risk potential for the release of ENP in the environment has increased as never before. ENP are expected to pass the wastewater-river-topsoil-groundwater pathway. In the terrestrial and aquatic environment ENP can undergo aging and transformation processes which can influence fate, transport and toxicological effects to different living organisms.

The scope of this workshop is to gather researchers, scientists, experts and specialists from nanoparticle and colloid science, soil and environmental chemistry, ecotoxicology or neighbouring disciplines to discuss the latest results and findings in the field of release, aging, fate, transport and toxicological effects of nanoparticles in the environment.

The Workshop will be held within the INTERNANO project "Mobility, aging and functioning of engineered inorganic nanoparticles at the aquatic-terrestrial interface".

Topics

- **Release, fate, stability, reactivity, and speciation**
- **Transport**
- **Biological impact**
- **Mesocosm and field experiments**
- **Analytics**

Scientific Committee

Gabriele E. Schaumann

University of Koblenz-Landau, Landau, Germany

Thomas Baumann

Technical University of Munich, Munich, Germany

Reinhard Niessner

Technical University of Munich, Munich, Germany

Friederike Lang

University of Freiburg, Freiburg, Germany

Werner Manz

University of Koblenz-Landau, Koblenz, Germany

Ralf Schulz

University of Koblenz-Landau, Landau, Germany

Hans Jörg Vogel

Helmholtz Centre for Environmental Research, Leipzig/Halle, Germany

Conference Venue

The city of Landau is located in the district of southern Rhineland-Palatinate and is characterised by the culinary delights of viticulture and the cuisine of Palatinate and nearby France. The beautiful town centre with an ample pedestrian area, neat parks, a lively market and friendly people tells a turbulent history.

Landau is surrounded by vineyards and villages of the scenic German Wine Route and the Palatinate Forest offers recreation.

Workshop host is the University of Koblenz-Landau with the campus on the remains of the French star fort.



Abstract Submission

You are invited to submit an abstract for an oral or poster contribution on our workshop.

Please send the abstract and completed submission form by e-mail to the address: internano@uni-landau.de

You can submit one or more abstracts. Please use for each abstract one submission form. Your contribution will be reviewed and you will be notified after the review process.

